

TECHNICAL MANUAL

**DIRECT SUPPORT AND GENERAL SUPPORT MAINTENANCE
REPAIR PARTS AND SPECIAL TOOLS LISTS
(INCLUDING DEPOT MAINTENANCE REPAIR PARTS AND SPECIAL TOOLS)
FOR**

**WIND MEASURING SET AN/PMQ-3A
(NSN 666000515-4339)**

HEADQUARTERS, DEPARTMENT OF THE ARMY

5 OCTOBER 1978

**DIRECT SUPPORT AND GENERAL SUPPORT MAINTENANCE
REPAIR PARTS AND SPECIAL TOOLS LISTS
(INCLUDING DEPOT MAINTENANCE REPAIR PARTS AND SPECIAL TOOLS)
FOR
WIND MEASURING SET AN/PMQ-3A
(NSN 6660-00-515-4339)**

Current as of June 1978

REPORTING OF ERRORS

You can improve this manual by reminding improvements using DA Form 2028-2 located in the back of the manual. Simply tear out the self-addressed form, fill it out as shown on the sample, fold it where shown, and drop it in the mail.

If there are no blank DA Forms 2028-2 in the back of your manual, use the standard DA Form 2028 (Recommended Changes to Publications and Blank Forms) and forward to the Commander, US Army Communications and Electronics Materiel Readiness Command, ATTN: DRSEL-ME-Q, Fort Monmouth, New Jersey 07703.

In either case reply will be furnished direct to you.

Table of Contents

		Page	Illus Figure
SECTION	I.	Introduction.....	1
	II.	Repair parts list	5
GROUP	00	Measuring Set, Wind AN/PMQ-3A	5 1
	01	Wind Vane, Anemometer ML-446A/PMQ-3(A1)	9 2
		0101 Trigger assembly (A2).....	11 3
		0102 Meter assembly wind speed (A9).....	13 4
		0103 Wind Vane ML-447A/PMQ-3(AT).....	15 5
		0104 Wind dial assembly (A11)	16 6
	02	Transmitter Wind Speed T-321A/PMQ-3(A2)	19 7
	03	Carrying Case CY- 1067D/PMQ-3(A13)	23 8
SECTION	III.	Special tools list (Not applicable)	
	IV.	National stock number and part number index	24

*This manual supersedes TM 11-6660-232-34P, 5 May 1977.

**SECTION I
INTRODUCTION**

1. Scope

This manual list spares and repair part; special tools; special test, measurement, and diagnostic equipment (TMDE), and other special support equipment required for performance of direct support and general support maintenance of the AN/PMQ-3A. It authorizes the requisitioning of issue of spares and repair parts as indicated by the source and maintenance codes.

2. General

This Repair Parts and Special Tools List is divided into the following sections:

a. Section II. Repair Parts List. A list of spares and repair parts authorized for use in the performance of maintenance. The list also includes parts which must be removed for replacement of the authorized parts. Parts lists are composed of functional groups in numeric sequence, with the parts in each group listed in figure and item number sequence.

b. Section III. Special Tools List. Not applicable.

c. Section IV. National Stock Number and Part Number Index. A list, in National item identification number (NIIN) sequence, of all National stock numbers (NSN) appearing in the listings, followed by a list, in alphanumeric sequence, of all part numbers appearing in the listings. National stock numbers and part numbers are cross-referenced to each illustration figure and item number appearance.

3. Explanation of Columns

a. Illustration This column is divided s follows:

(1) *Figure number.* Indicates the figure number of the illustration on which the item is shown.

(2) *Item number.* The number used to identify item called out in the illustration.

b. Source, Maintenance, and Recoverability (SMR) Codes.

(1) *Source code.* Source codes indicates the manner of acquiring support items for maintenance, repair, or overhaul of end items. Source codes are entered in the first and second positions of the Uniform SMR Code format as follows:

<i>Code</i>	<i>Definition</i>
PA-Item procured and stocked for anticipated or known usage.	
PD-Support item, excluding support equipment, procured for initial issue or outfitting and	

<i>Code</i>	<i>Definition</i>
	stocked only for subsequent or additional initial issues or outfittings. Not subject to automatic replenishment.
XD-A	support item that is not stocked. When required, item will be procured through normal supply channels.

NOTE

Cannibalization or salvage may be used as a source of supply for any items source coded above except those coded XA and aircraft support items as restricted by AR 700-42.

(2) *Maintenance code.* Maintenance codes are assigned to indicate the levels of maintenance authorized to USE and REPAIR support items. The maintenance codes are entered in the third and fourth positions of the Uniform SMR Code format as follows:

(a) The maintenance code entered in the third position will indicate the lowest maintenance level authorized to remove, replace, and use the support item. The maintenance code entered in the third position will indicate one of the following levels of maintenance:

<i>Code</i>	<i>Application/Explanation</i>
O-Support item is removed, replaced, used at the organizational level.	
F-Support item is removed, replaced, used at the direct support level.	
H-Support item is removed, replaced, used at the general support level.	
D--Support items that are removed, replaced, used at depot, mobile depot, specialized repair activity only.	

(b) The maintenance code entered in the fourth position indicates whether the item is to be repaired and identifies the lowest maintenance level with the capability to perform complete repair (i.e., all authorized maintenance functions). This position will contain one of the following maintenance codes:

<i>Code</i>	<i>Application/Explanation</i>
H-The lowest maintenance level capable of complete repair of the support item is the general support level.	
D-The lowest maintenance level capable of complete repair of the support item is the depot level.	
Z-Nonreparable. No repair is authorized.	

(3) *Recoverability code.* Recoverability codes are assigned to support items to indicate the

disposition action on unserviceable items. The recoverability code is entered in the fifth position of the Uniform SMR Code format as follows:

<i>Recoverability codes</i>	<i>Definition</i>
-----------------------------	-------------------

- Z-Nonreparable item. When unserviceable, condemn and dispose at the level indicated in position 3.
- H-Reparable item. When uneconomically reparable, condemn and dispose at the general support level.
- D-Reparable item. When beyond lower level repair capability, return to depot. Condemnation and disposal not authorized below depot level.
- L-Reparable item. Repair, condemnation, and disposal not authorized below depot/specialized repair activity level.

c. National Stock Number. Indicates the National stock number assigned to the item and will be used for requisitioning purposes.

d. Part Number. Indicates the primary number used by the manufacturer (individual, company, firm, corporation, or Government activity), which controls the design and characteristics of the item by means of its engineering drawings, specifications, standards, and inspection requirements to identify an item or range of items.

NOTE

When a stock numbered item is requisitioned, the repair part received may have a different part number than the part being replaced.

e. Federal Supply Code for Manufacturer (FSCM). The FSCM is a 5-digit numeric code listed in SB 708-42 which is used to identify the manufacturer, distributor, or Government agency, etc.

f. Description. Indicates the Federal' item name and, if required, a minimum description to identify the item.

g. Unit of Measure (U/M). Indicates the standard of the basic quantity of the listed item as used in performing the actual maintenance function. This measure is expressed by a two character alphabetical abbreviation (e.g., ea, in, pr, etc). When the unit of measure differs from the

unit of issue, the lowest unit of issue that will satisfy the required units of measure will be requisitioned.

h. Quantity Incorporated in Unit. Indicates the quantity of the item used in the breakout shown on the illustration figure, which is prepared for a functional group, subfunctional group, or an assembly.

4. Special Information

The following publications pertain to the AN/PMQ-3A and its components:

- TM 11-6660-232-15, Wind Measuring Set AN/PMQ.3A
- TM 11-6660-232-20P, Wind Measuring Set AN/PMQ-3A

5. How to Locate Repair Parts

a. When National stock number or part number is unknown.

(1) First. Using the table of contents, determine the functional group within which the item belongs. This is necessary since illustrations are prepared for functional groups and listings are divided into the same groups.

(2) Second. Find the illustration covering the functional group to which the item belongs.

(3) Third. Identify the item on the illustration and note the illustration figure and item number of the item.

(4) Fourth. Using the Repair Parts Listing, find the figure and item number noted on the illustration.

b. When National stock number or part number is known.

(1) First. Using the Index of National Stock Numbers and Part Numbers, find the pertinent National stock number or part number. This index is in NIIN sequence followed by a list of part numbers in alphameric sequence, cross-referenced to the illustration figure number and item number.

(2) Second. After finding the figure and item number, locate the figure and item number in the repair parts list.

6. Abbreviation.

Not applicable.

(Next printed page is 5 / (6 blank))

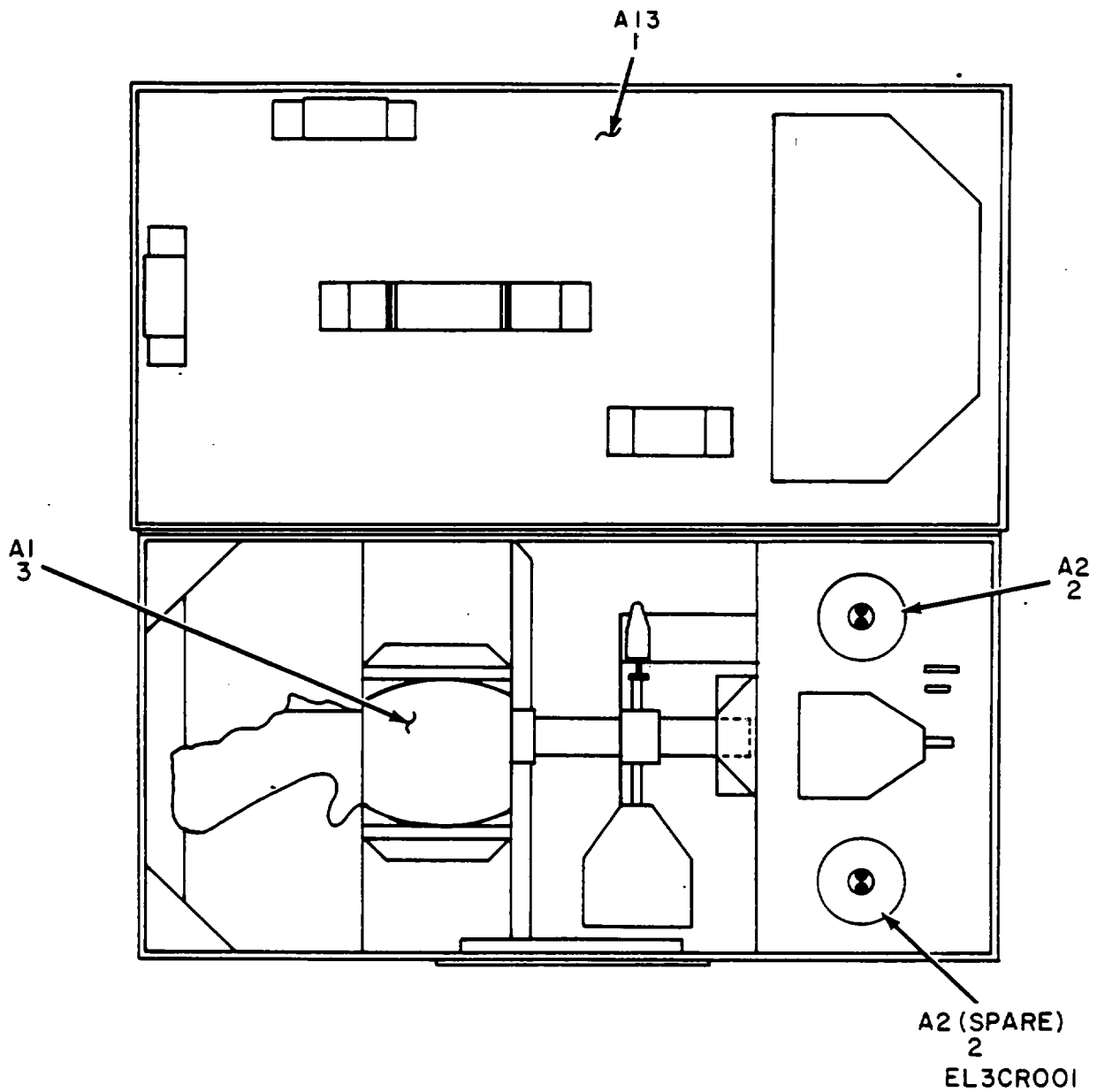
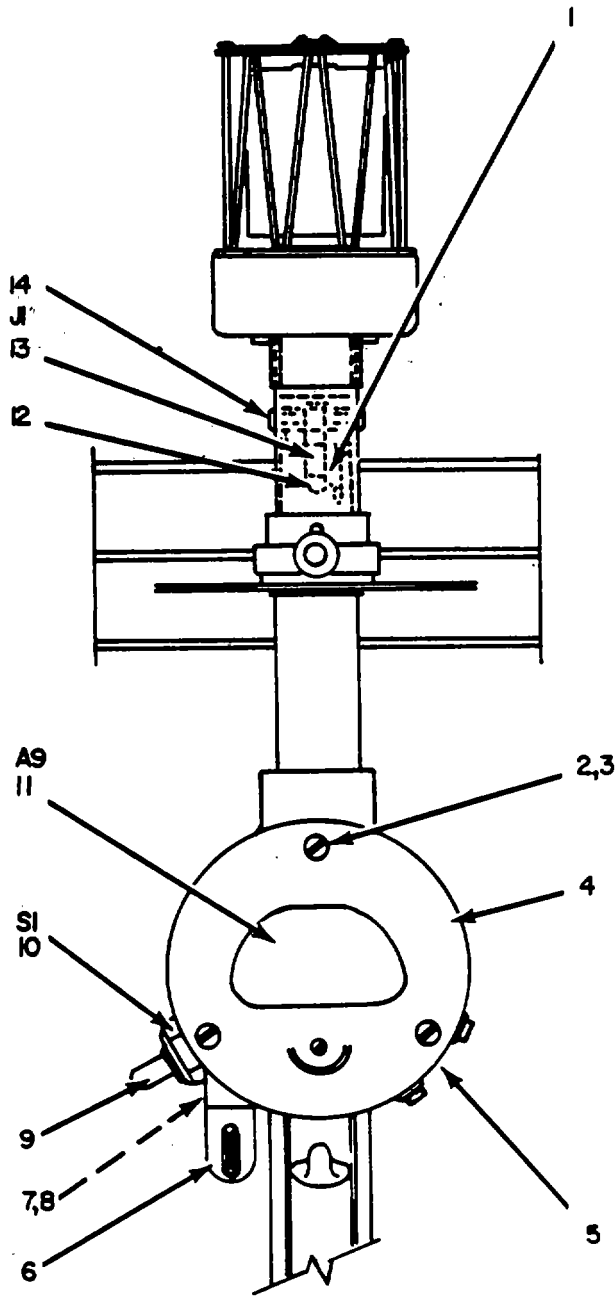


Figure 1. Measuring Set, Wind AN/P.AQ-3A.

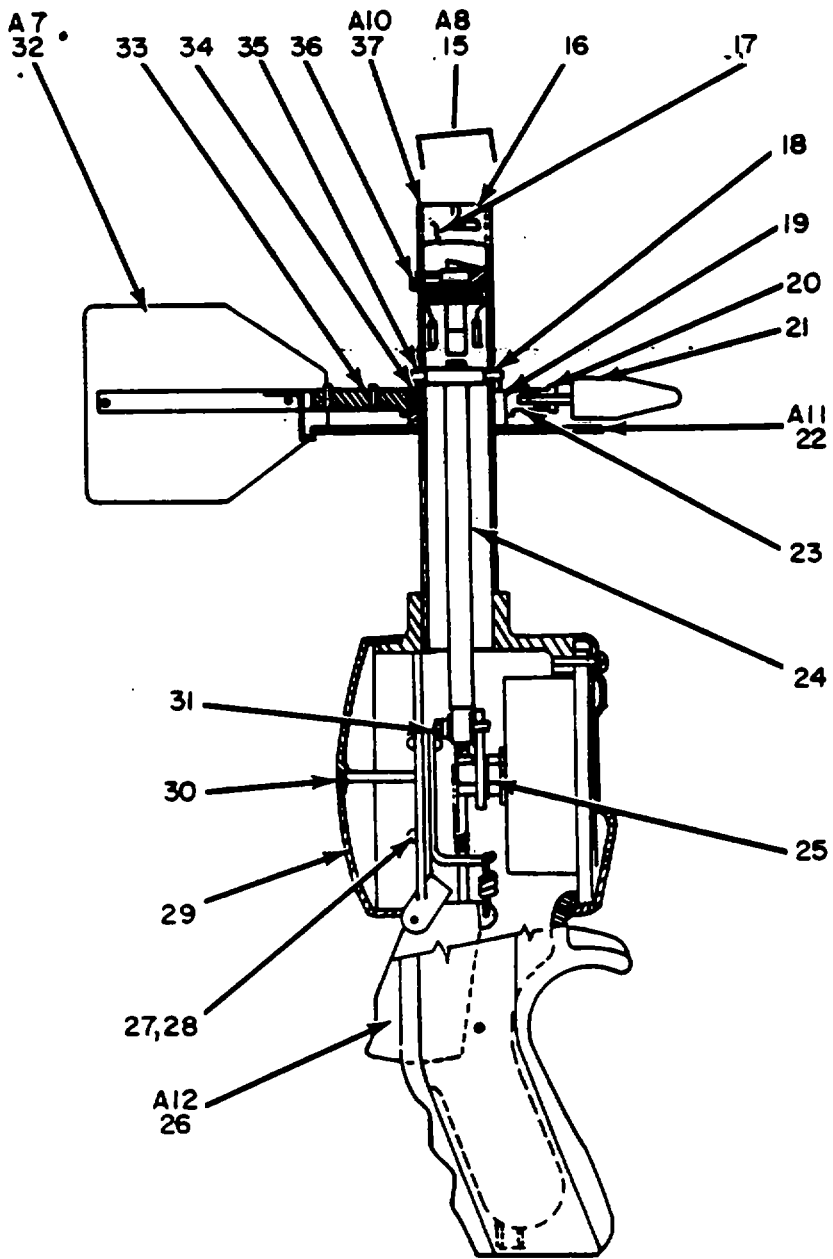
(1) ILLUSTRATION		(2)	(3)	(4)	(5)	(6)	(7)	(8)
(a) FIG NO.	(b) ITEM NO.	SMR CODE	NATIONAL STOCK NUMBER	PART NUMBER	FSCM	DESCRIPTION USABLE ON CODE	U/M	QTY INC IN UNIT
1	1	PDOHH	6606-00-964-8990	SMB367349	80063	GROUP 00 MEASURING SET, WIND AN PMQ-3A	EA	1
1	2	PDODL	6606-00-515-4342	SMB367310	80063	CASE CY1067D/PMQ3	EA	2
1	3	PDOHH	6660-00-515-4341	SMD367334	80063	WIND SPEED TRANSMITTER T-321A/PMQ-3 ANEMOMETER	EA	1



FRONT VIEW

EL3CR002

Figure 2. Wind Vane, Anemometer ML-446A/PMQ-3 (A1)(Sheet 1 of 2).

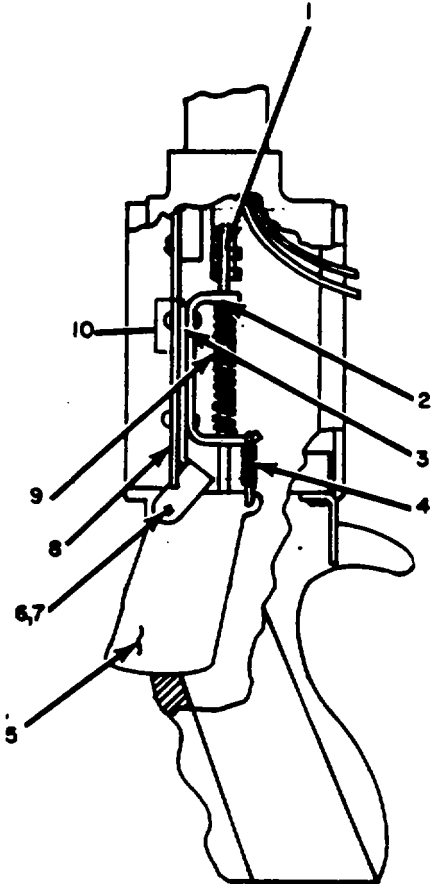


INTERIOR SIDE VIEW

EL3CR003

Figure 2. Wind Vane, Anemometer ML-446A/PMQ-3 (A1)(Sheet 2 of 2).

(1) ILLUSTRATION		(2)	(3)	(4)	(5)	(6) DESCRIPTION	(7)	(8)
(a) FIG NO.	(b) ITEM NO.	SMR CODE	NATIONAL STOCK NUMBER	PART NUMBER	FSCM	USABLE ON CODE	U/M	QTY INC IN UNIT
						GROUP 01 WIND VANE, ANEMOMETER ML-446/PMQ-3(A1)		
2	1	XDHZZ		SMB367322	80063	CONTACT, ELECTRICAL	EA	1
2	2	XDDZZ	5305-00-054-6652	MS51957-28	96906	SCREW MACHINE	EA	3
2	3	XDDZZ		SMB367343	80063	WASHER, NONMETALLIC	EA	3
2	3	XDDZZ		SMB367343	80063	WASHER, NONMETALLIC	EA	3
2	4	XDDZZ		SMB367328	80063	BEZEL, INSTRUMENT MOUNTING	EA	1
2	5	XDDZZ		SMB367333	80063	PLATE, IDENTIFICATION	EA	1
2	6	XDDZZ		SMB367342	80083	SIGHT	EA	1
2	7	XDDZZ	5305-00-054-5647	MS651957-13	96906	SCREW, MACHINE	EA	4
2	8	XDDZZ	5310-00-550-3715	MS35333-70	96906	WASHER, LOCK INTERNAL TOOTH	EA	5
2	9	XDDZZ		SMB367339	80063	BOOT, DUST AND MOISTURE SEAL	EA	1
2	10	PAFZZ	5930-00-503-3881	201521	34199	SWITCH, TOGGLE	EA	1
2	11	XDHZZ	6660-00-055-2845	SMC367331	80063	METER, ASSEMBLY	EA	1
2	12	XDHZZ		SMB367321	80063	BUSHING, JACK	EA	1
2	13	XDHZZ		SMB367320	80063	JACK, TELEPHONE	EA	1
2	14	XDHZZ		MS3533-13	96906	SCREW, MACHINE	EA	3
2	15	XDDZZ		SMB367332	80063	HOUSING ASSEMBLY	EA	1
2	16	XDDZZ		SMB367326	80063	HOUSING, BARE	EA	1
2	17	XDDZZ		SMB367325	80063	TUBE, EXTENSION	EA	1
2	18	XDHZZ		SMC367344	80063	RING, VANE	EA	1
2	19	XDHZZ		440C	43334	BALL, BEARING	EA	30
2	20	XDHZZ	5310-00-934-9759	MS35649-284	96906	NUT, PLAIN, HEXAGON	EA	1
2	21	XDHZZ		SMC367345	80063	NOSE, WIND VANE	EA	1
2	22	PAHDD	6660-00-055-2844	SMC367337	80063	WIND DIAL ASSEMBLY	EA	1
2	23	XDHZZ		SMC367348	80063	HUB, WIND VANE	EA	1
2	24	XDHZZ		SMB367338	80063	SHAFT, VERTICAL	EA	1
2	25	XDHZZ		RA18-14	96906	TERMINAL, LUG	EA	1
2	26	PAFHH	6660-00-055-2846	SMC367319	80063	TRIGGER ASSEMBLY	EA	1
2	27	XDHZZ	5305-00-543-2188	MS35333-71	96906	SCREW, MACHINE	EA	3
2	28	XDHZZ	5310-00-616-3555	MS35333-71	96906	WASHER, LOCK INTERNAL TOOTH	EA	3
2	29	XDDZZ		SMB367341	80063	COVER, HOUSING	EA	1
2	30	XDDZZ		MS35249-29	96906	SCREW, MACHINE	EA	1
2	31	XDHZZ		4-40X1/8	08664	SCREW, MACHINE	EA	2
2	32	PAODL	6660-00-323-2262	SMD367294	80063	VANE, WIND	EA	2
2	33	XDHZZ		SMC367347	80063	PIN BRAKE	EA	1
2	34	XDHZZ		SMC367346	80063	BUSHING, ROD	EA	1
2	35	XDHZZ	5305-00-770-2533	MS51959-13	96906	SCREW, MACHINE, FLAT	EA	3
2	36	XDHZZ		2-56X1/8	82205	SCREW, CAP, SOCKET HEAD	EA	1
2	37	XDHZZ		SMB367323	80063	JACK, ASSEMBLY	EA	1



SIDE VIEW

EL3CRO04

Figure 3. Trigger Assembly A12.

(1) ILLUSTRATION		(2)	(3)	(4)	(5)	(6)	(7)	(8)
(a) FIG NO.	(b) ITEM NO.	SMR CODE	NATIONAL STOCK NUMBER	PART NUMBER	FSCM	DESCRIPTION USABLE ON CODE	U/M	QTY INC IN UNIT
						GROUP 0101 TRIGGER ASSEMBLY (A12)		
3	1	XDHZZ		SMB367315	80063	PLUNGER, VANE LOCK	EA	1
3	2	XDHZZ		SMB367305	80063	BRACKET, ANGLE	EA	1
3	3	XDHZZ		SMB367312	80063	BRACKET, PLUNGER	EA	1
3	4	XDHZZ		SMB367316	80063	SPRING, TRIGGER RETURN	EA	1
3	5	XDHZZ		SMB367314	80063	TRIGGER, VANE	EA	1
3	7	XDHZZ		SMB367318	80063	SHAFT, TRIGGER	EA	1
3	8	XDHZZ		SMB367319-1	80063	RING, RETAINER	EA	1
3	9	XDHZZ		SMB367311	80063	PLATE, SWITCH	EA	1
3	9	XDHZZ		SMB367317	80063	SPRING, VANE LOCK	EA	1
3	10	XDHZZ		SMB367313	80063	PLATE ASSEMBLY	EA	1

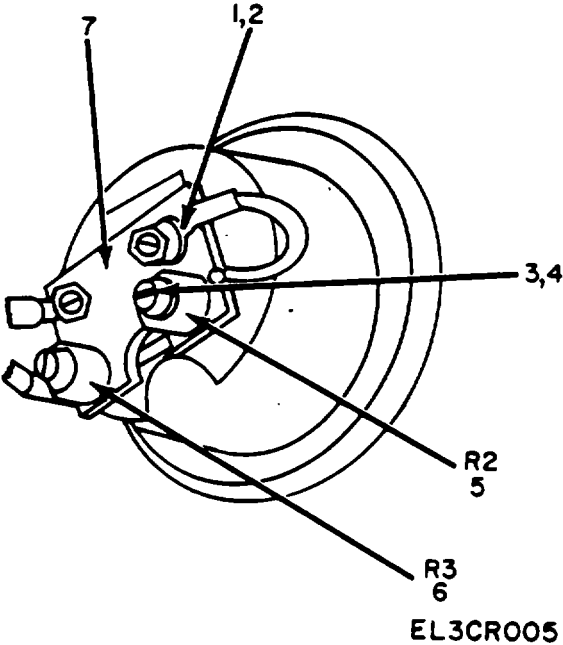


Figure 4. Meter Assembly Windspeed (A9).

(1) ILLUSTRATION		(2)	(3)	(4)	(5)	(6) DESCRIPTION	(7)	(8)
(a) FIG NO.	(b) ITEM NO.	SMR CODE	NATIONAL STOCK NUMBER	PART NUMBER	FSCM	USABLE ON CODE	U/M	QTY INC IN UNIT
						GROUP 0102 METER ASSEMBLY, WINDSPEED (A9)		
4	1	XDDZZ		RA18-14	59730	TERMINAL, LUG	EA	2
4	2	XDDZZ	5310-00-543-2740	MS35333-74	96906	WASHER, LOCK	EA	2
4	3	XDDZZ	5305-00-543-2188	MS35233-32	96906	SCREW, MACHINE	EA	2
4	4	XDDZZ	5310-00-606-3555	MS35333-71	96906	WASHER, LOCK, INTERNAL TOOTH	EA	2
4	5	XDDZZ		SMC367331-1	80063	RESISTOR, FIXED COMPOSITION	EA	1
4	6	XDDZZ		SMC367331-1	80063	RESISTOR, FIXED COMPOSITION	EA	1
4	7	XDDZZ		SMB367330	80063	PLATE, RESISTOR MOUNTING	EA	1

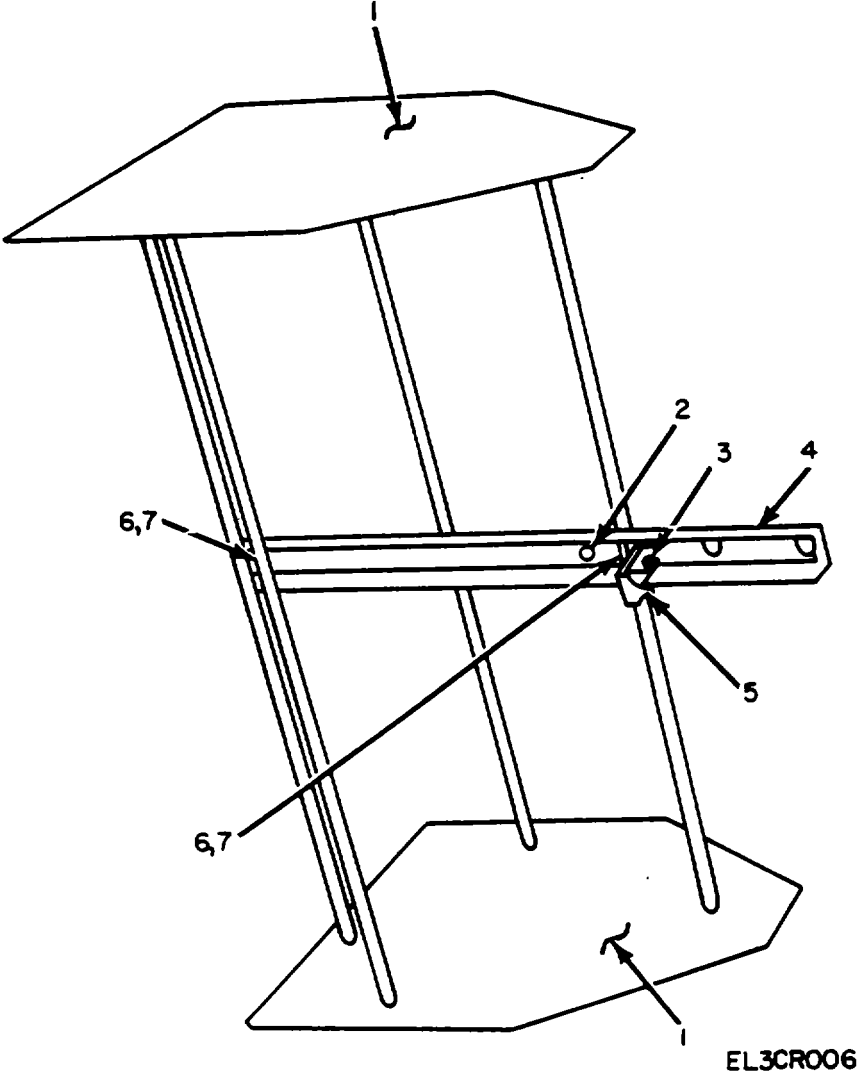
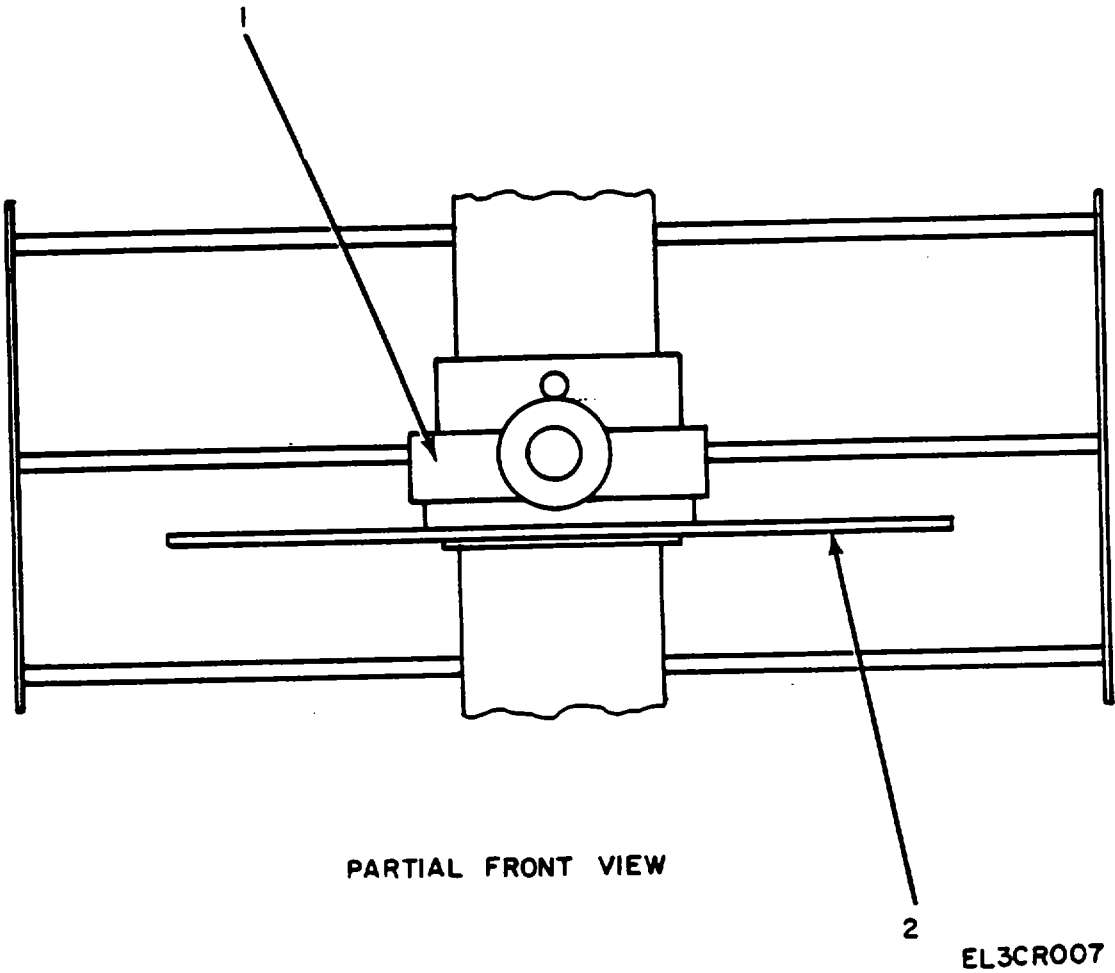


Figure 5. Wind Vane ML-447A/PMQ-3 (A7).

(1) ILLUSTRATION		(2)	(3)	(4)	(5)	(6) DESCRIPTION	(7)	(8)
(a) FIG NO.	(b) ITEM NO.	SMR CODE	NATIONAL STOCK NUMBER	PART NUMBER	FSCM	USABLE ON CODE	U/M	QTY INC IN UNIT
						GROUP 0103 WIND VANE ML-447A/PMQ-3 (A7)		
5	1	XDDZZ		SMC367285	80063	RUDDER, VANE	EA	2
5	2	XDDZZ		SMC367285	80063	PIN, SHOULDER, HEADLESS	EA	4
5	3	XDDZZ		2-56X5/16	08664	SCREW, MACHINE	EA	1
5	4	XDDZZ		SMB367284	80063	BRACKET, DOUBLE ANGLE	EA	1
5	5	XDDZZ		SMB367283	80063	POINTER, DIAL	EA	1
5	6	XDDZZ		SMB367287	80063	COLLAR, SHAFT	EA	2
5	7	XDDZZ		2-56X1\16	08664	SCREW, SET	EA	2



PARTIAL FRONT VIEW

EL3CR007

Figure 6. Wind Dial Assembly (A11).

(1) ILLUSTRATION		(2)	(3)	(4)	(5)	(6)	(7)	(8)
(a) FIG NO.	(b) ITEM NO.	SMR CODE	NATIONAL STOCK NUMBER	PART NUMBER	FSCM	DESCRIPTION USABLE ON CODE	U/M	QTY INC IN UNIT
6	1			SMC367336	80063	GROUP 0104 WIND DIAL ASSEMBLY (A11).		
6	2			SMC367335	80063	HUB, DIAL DIAL, SCALE	EA EA	1 1

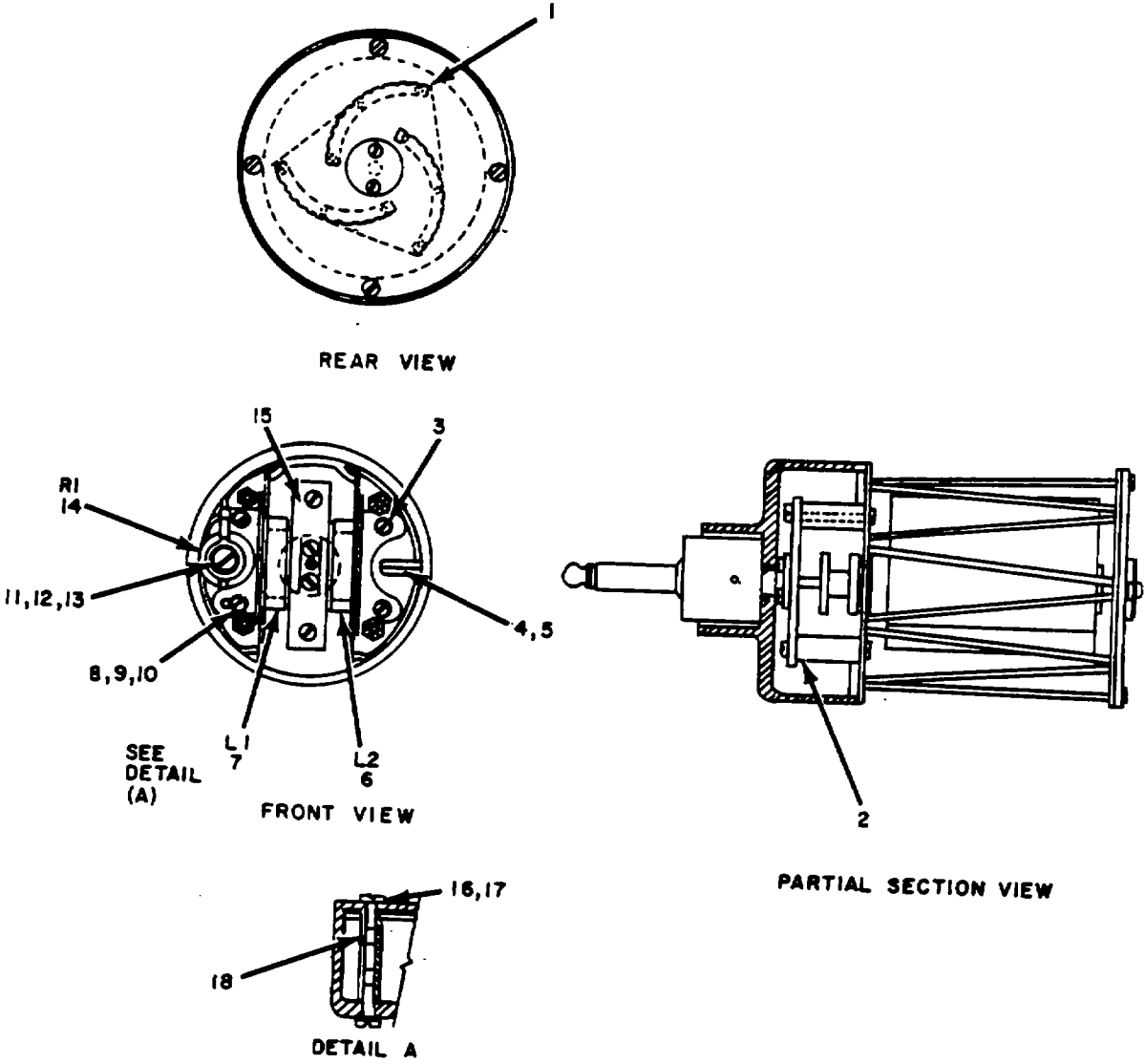
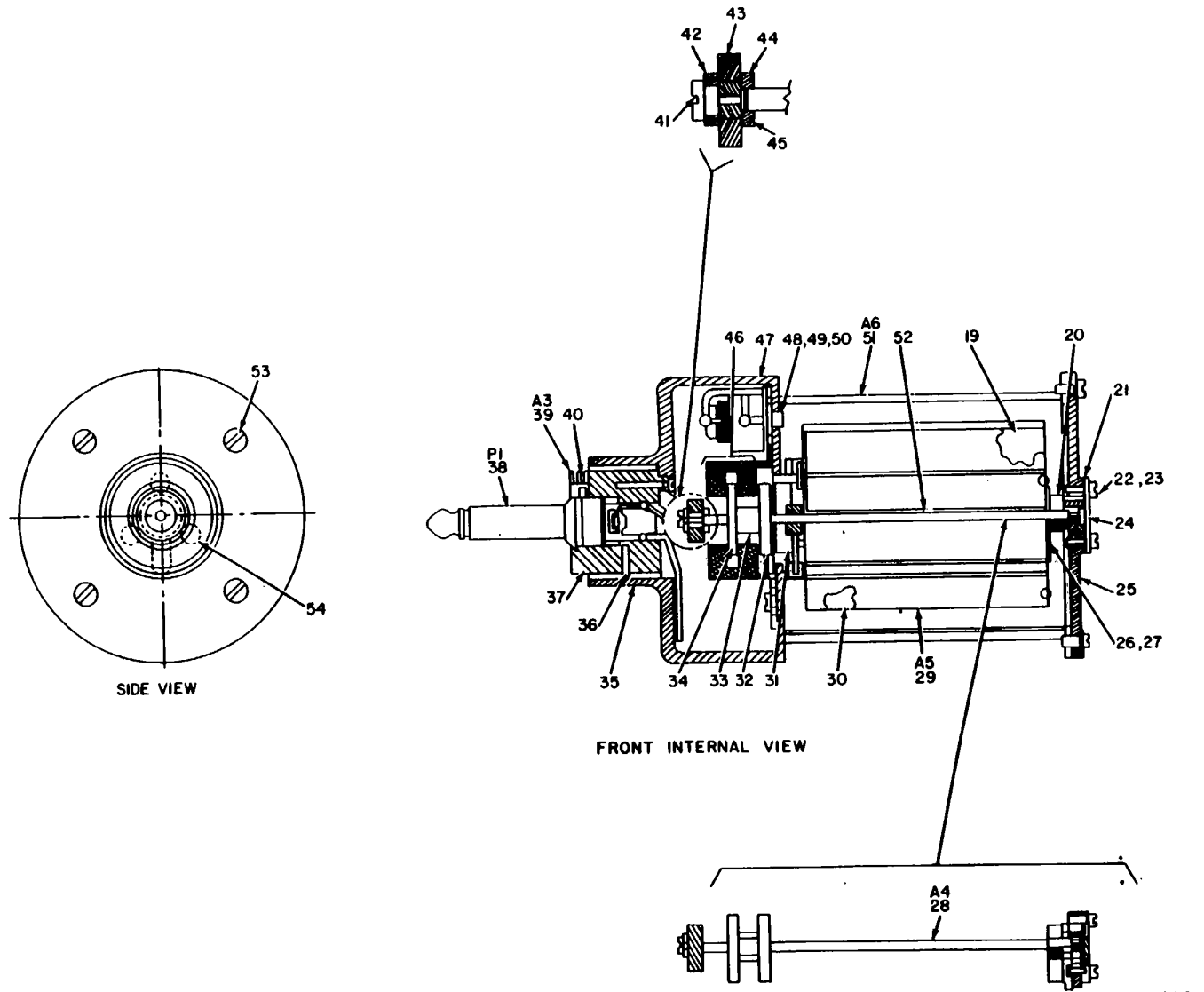


Figure 7. Transmitter, Wind Speed T-321A/PMQ-3 (A2) (Sheet 1 of 2)

EL3CRO08



EL3CR009

Figure 7. Transmitter, Wind Speed T-321A/PMQ-3 (A2) (Sheet 2 of 2)

(1) ILLUSTRATION		(2)	(3)	(4)	(5)	(6) DESCRIPTION	(7)	(8)
(a) FIG NO.	(b) ITEM NO.	SMR CODE	NATIONAL STOCK NUMBER	PART NUMBER	FSCM	USABLE ON CODE	U/M	QTY INC IN UNIT
						GROUP 02 TRANSMITTER, WIND SPEED T-3321/PMMQ-3 (A2)		
7	1	XDDZZ		SMB367265	80063	SEGMENT, VANE	EA	3
7	2	XDDZZ		SMC367280	80063	PILLAR	EA	2
7	3	XDDZZ		SE2X3/32IN-LG	07707	EYELET, METALLIC	EA	4
7	4	XDDZZ		SMB367308	80063	BOBBIN	EA	2
7	5	XDDZZ		SE2X1/8IN-LG	07707	EYELET, METALLIC	EA	4
7	6	XDDZZ		SMB367308	80063	COIL, LEFT HAND	EA	1
7	7	XDDZZ		SMB367307	80063	COIL, RIGHT HAND	EA	1
7	8	XDDZZ	5305-00-579-3029	MS35233-1	96906	SCREW, MACHINE	EA	2
7	9	XDDZZ	5310-00-543-4652	MS35333-69	96906	WASHER, LOCK, INTERNAL TOOTH	EA	2
7	10	XDDZZ		MS35337-58	96906	WASHER, FLAT, PLAIN	EA	2
7	11	XDDZZ	5305-00-054-6655	MS35233-31	96906	SCREW, MACHINE	EA	1
7	12	XDDZZ	5310-00-616-3555	MS35333-71	96906	BRACKET, COIL	EA	1
7	13	XDDZZ	5310-00-274-8702	MS35338-60	96906	SCREW, MACHINE	EA	1
7	14	XDDZZ		SMB367298	80063	RESISTOR, FIXED, COMPOSITION	EA	1
7	15	XDDZZ		SMB367302	80063	BRACKET, COIL	EA	1
7	16	XDDZZ	5305-00-054-5646	MS51957-12	96906	SCREW, MACHINE	EA	1
7	17	XDDZZ	5310-00-550-3715	MS35333-70	96906	WASHER, LOCK, INTERNAL TOOTH	EA	1
7	18	XDDZZ		SMB397300	80063	PILLAR, HEXAGONAL	EA	4
7	19	XDDZZ		SMB367291	80063	MAGNET, ROTOR	EA	4
7	20	XDDZZ		2-56X1/16	08664	SCREW, SET	EA	4
7	21	XDDZZ		SMB367359	80063	RETAINER, TOP BEARING	EA	1
7	22	XDDZZ	5310-00-734-5661	MS355337-78	96906	WASHER, LOCK	EA	10
7	23	XDDZZ		2-56X5/16	08664	SCREW, MACHINE	EA	2
7	24	XDDZZ		SMB367258	80063	CAP, TOP, BEARING, RETAINER	EA	1
7	25	XDDZZ		SMB367296	80063	PLATE, CAGE	EA	1
7	26	XDDZZ		SMB367279	80063	ROTOR AND HUB ASSEMBLY	EA	1
7	27	XDDZZ		SMB367277	80063	SPACER	EA	1
7	28	XDDZZ		SMB367293	80063	ROTOR SHAFT ASSEMBLY	EA	1
7	29	XDDZZ		SMB367267	80063	ROTOR VANE ASSEMBLY	EA	1
7	30	XDDZZ		SMB367292	80063	MAGNET, ROTOR	EA	1
7	31	XDDZZ		SMB367263	80063	SHIELD, RAIN	EA	1
7	32	XDDZZ		SMB367264	80063	LOWER PLATE ASSEMBLY	EA	1
7	33	XDDZZ		SMB367260	80063	HUB, ROTOR	EA	1
7	34	XDDZZ		SMB367259	80063	PLATE, ROTOR	EA	2
7	35	XDDZZ		SMB367309	80063	HOUSING, GENERATOR	EA	1
7	36	XDDZZ		SMB367274	80063	PIN, COUPLING	EA	1
7	37	XDDZZ		SMB367275	80063	BUSHING, PLUG	EA	1
7	38	XDDZZ		SMB367299	80063	PLUG, TELEPHONE	EA	1

(1) ILLUSTRATION		(2)	(3)	(4)	(5)	(6) DESCRIPTION	(7)	(8)
(a) FIG NO.	(b) ITEM NO.	SMR CODE	NATIONAL STOCK NUMBER	PART NUMBER	FSCM	USABLE ON CODE	U/M	QTY INC IN UNIT
7	39	XDDZZ		SMB367276	80063	BUSHING, PLUG ASSEMBLY	EA	1
7	40	XDDZZ		2-56X1/8	82205	SCREW, CAP, SOCKET HEAD	EA	1
7	41	XDDZZ		2-56X3/16	08664	SCREW, CAP	EA	1
7	42	XDDZZ		SMB367304	80063	RETAINER, LOWER BEARING	EA	1
7	43	XDDZZ		SMC367301	80063	PLATE, RETAINING, BEARING	EA	1
7	44	XDDZZ		77M0310ZJ5J	43334	BEARING, PIVOT	EA	1
7	45	XDDZZ		SMD367295	80063	PLATE, RETAINER BEARING	EA	1
7	46	XDDZZ		SMB367261	80063	UPPER PLATE ASSEMBLY	EA	1
7	47	XDDZZ		SMB367297	80063	GASKET, GENERATOR	EA	1
7	48	XDDZZ		1-72X1/8	80063	SCREW, CAP	EA	1
7	49	XDDZZ	5310-00-938-2013	MS35649-224	96906	NUT, PLAIN, HEXAGON	EA	1
7	50	XDDZZ		24	37103	PIN, STRAIGHT	EA	1
7	51	XDDZZ		SMC367273	80063	ROTOR, CAGE ASSEMBLY	EA	1
7	52	XDDZZ		SMB367278	80063	SHAFT, ROTOR	EA	1
7	53	XDDZZ	5305-00-054-5647	MS51957-13	96906	SCREW, MACHINE	EA	4
7	54	XDDZZ		MS35242-3	96906	SCREW, MACHINE, FLAT HEAD	EA	3

20/(21 blank)

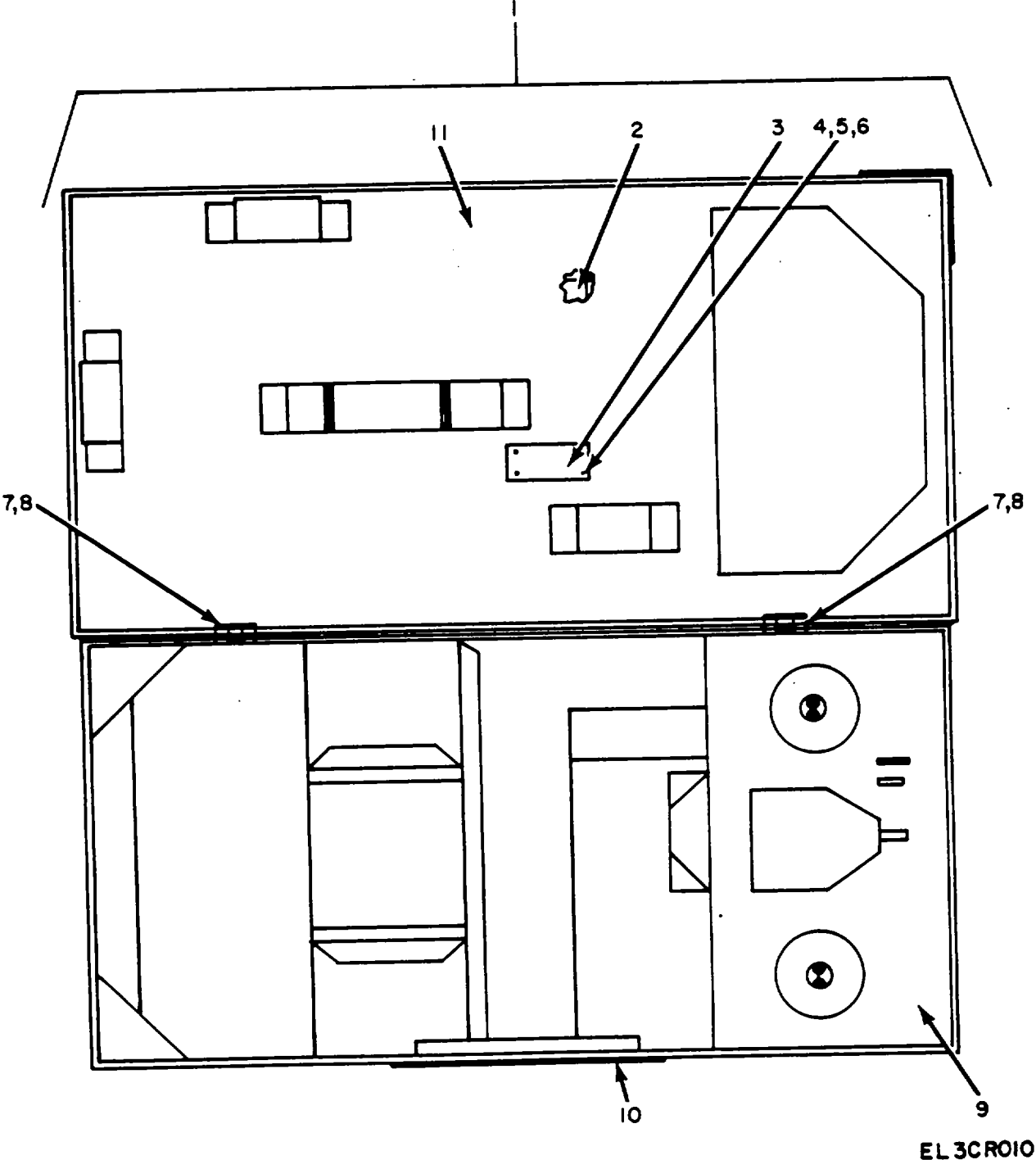


Figure 8. Carrying Case CY-1067D/PMZ-3 (A13).

(1) ILLUSTRATION		(2)	(3)	(4)	(5)	(6) DESCRIPTION	(7)	(8)
(a) FIG NO.	(b) ITEM NO.	SMR CODE	NATIONAL STOCK NUMBER	PART NUMBER	FSCM	USABLE ON CODE	U/M	QTY INC IN UNIT
						GROUP 03 CARRYING CASE CY-1067D/PMQ-3 (A13)		
8	1	XDHZZ		SMB367350	80063	CASE, BARE	EA	1
8	2	XDHZZ		SMB367356	80063	PLATE, IDENTIFICATION	EA	1
8	3	XDHZZ		SMB367357	80063	PLATE, IDENTIFICATION	EA	1
8	4	XDHZZ	5305-00-054-5646	MS51957-12	96906	SCREW, MACHINE	EA	4
8	5	XDHZZ	5310-00-550-3715	MS35333-70	96906	WASHER, LOCK, INTERNAL TOOTH	EA	4
8	6	XDHZZ	5310-00-934-9748	MS35649-244	96906	NUT, PLAIN, HEXAGON	EA	4
8	7	XDHZZ		SMB367354	80063	HINGE, CASE	EA	2
8	8	XDHZZ		SMB367353	80063	HINGE, BUTT	EA	2
8	9	XDHZZ		SMB367352	80063	CASE, INSERT, BOTTOM	EA	1
8	10	XDHZZ		SMB367352	80063	HANDLE, SURFACE	EA	1
8	11	XDHZZ		SMB367351	80063	CASE, INSERT, TOP	EA	1

NATIONAL STOCK NUMBER AND PART NUMBER INDEX

NOTE: LATEST STOCK NUMBER AND PART NUMBER ASSIGNMENTS ARE INCLUDED AT END OF INDEX

STOCK NUMBER	FIGURE NUMBER	ITEM NUMBER	STOCK NUMBER	FIGURE NUMBER	ITEM NUMBER
5305-00-054-6655	7	11	5310-00-543-4652	7	9
6660-00-055-2844	2	22	5310-00-550-3715	2	8
6660-00-055-2845	2	11	5310-00-550-3715	7	17
6660-00-055-2546	2	26	5310-00-550-3715	8	5
6660-00-323-2262	2	32	5310-00-616-3555	2	28
6660-00-515-4341	1	3	5310-00-616-3555	4	4
6660-00-515-4342	1	2	5310-00-616-3555	7	12
5305-00-543-2188	2	27	5310-00-734-5661	7	22
5305-00-543-2188	4	3	6660-00-964-8980	1	1
5310-00-543-2740	4	2			

PART NUMBER	FSCM	FIG. NO.	ITEM NO.	PART NUMBER	FSCM	FIG. NO.	ITEM NO.
MS35233-1	96906	7	8	SMB367314	80063	3	5
				SMB367315	80063	3	1
				SMB367316	80063	3	4
				SMB367317	80063	3	9
				SMB367318	80063	3	6
				SMB367319-1	80063	3	7
MS35233-31	96906	7	11	SMB67320	80063	2	13
MS35233-32	96906	2	27	SMB36732L	80063	2	12
MS35233-32	96906-	4	3	SMB367322	80063	2	1
M5S35242-3	96906	7	54	SMB367323	80063	2	37
				SMB367325	80063	2	17
MS35249-29	96906	2	30	SMB367326	80063	2	16
M35333-L3	96906	2	14	SMB367328	80063	2	4
M53533-69	96906	7	9	SMB367330	80063	4	7
MS35333-70	96906	2	8	SMB367331-2	80063	4	6
M535333-70	96906	7	17	SMB367332	80063	2	15
MS35333-70	96906	8	5	SMB367333	80063	2	5
M535333-71	96906	2	28	SMB367338	80063	2	24
MS35333-71	96906	4		SMB367339	80063	2	9
M535333-71	96906	7	12				
MS35333-74	96906	4	2	SMB367341	80063	2	29
MS35337-58	96906	7	10	SMB367342	80063	2	6
				SMB367343	80063	2	3
MS35337-78	96906	7	22	SMB367349	80063	1	1
				SMB367350	80063	8	1
				SMB367351	80063	8	11
				SMB367352	80063	8	9
RA18-14	59730	2	25	SMB367353	80063	8	8
RAL8-14	59730	4	1	SMB367354	80063	8	7
SMB2X1S81M-LG	07707	7	5	SMB367355	80063	8	10
SMB2X3/32IM-LG	07707	7	3	SMB367356	80063	8	2
SMB367259	80063	7	34	SMB367357	80063	8	3
SMB367260	80063	7	33	SMB367358	80063	7	24
SMB367261	80063	7	46	SMB367359	80063	7	21
5M8367263	80063	7	31	SMB397300	80063	7	18
SM367264	80063	7	32	SMC367273	80063	7	5L
SMB367265	80063	7	1	SMC361280	80063	1	2
SMB367267	80063	7	29	SMC367285	80063	5	1
SMB837274	80063	7	36	SMC367286	d0063	5	2
SMB367275	80063	7	37				
SMB367276	80063	7	39	SMC367301	80063	7	43
SMB367277	80063	7	27	SMC367319	80063	2	26
SMB367278	80063	7	52	SMC367331	80063	2	11
SMB367279	80063	7	26	SMC36733L-1	80063	4	5
SMB367283	80063	5	5	S5C367335	80063	6	2
SMB67264	80063	5	4	SMC367336	80063	6	1
SMB367287	80063	5	6	SMC367337	80063	2	22
SMB367291	80063	7	19	SMC367344	80063	2	18
SMB367292	80063	7	30	SMC367345	80063	2	21
SMB367293	80063	7	28	SMC367346	80063	2	34
SMB367296	80063	7	25	S4C367347	80063	2	33
SMB67297	80063	7	47	SMC367344	80063	2	23
SMB367298	80063	7	14	SMD367294	80063	2	32
SMB367299	80063	7	38	SMD367295	80063	7	45
SMB367302	80063	7	15	SMD367334	80063	1	3
SMB367304	80063	7	42	1-72X1/8	06888	7	48
SMB367305	80063	3	2	2-56X1/8	08664	5	7
SMB367306	80063	7	4	2-56X1/16	08664	7	20
SMB367307	80063	7	7	2-56x1/8	82205	2	36
SMB367308	80063	7	6	2-56X1/8	82205	7	40
SMB367309	80063	7	35	2-56X3/16	08664	7	41
SMB367310	80063	1	2	2-56X5/L16	08664	5	3
SMB367311	80063	3	8	2-56x5/16	08664	7	23
SMB367312	80063	3	3	24	37103	7	50
SMB36733	80063	3	10	4-40X1/8	08664	2	31

PART NUMBER	FSCM	FIG. NO.	ITEM NO.	PART NUMBER	FSCM	FIG. NO.	ITEM NO.
440C	43334	2	19	770310ZJSJ	43334	7	44

LATEST NATIONAL STOCK NUMBER ASSIGNMENTS

STOCK NUMBER	FIG NO.	ITEM NO.
5305-00-054-5646	7	16
5305-00-054-5646	8	4
5305-00-054-5647	2	7
5305-00-054-5647	7	53
5305-00-054-6652	2	2
5310-00-274-8702	7	13
5930-00-503-3881	2	10
5305-00-579-3029	7	8
5305-00-770-2533	2	35
5310-00-934-9748	8	6
5310-00-934-9759	2	20
5310-00-938-2013	7	49

LATEST PART NUMBER ASSIGNMENTS

PART NUMBER	FSCM	FIG NO.	ITEM NO.
MS1957-12	96906	7	16
MS51957-12	96906	8	14
MS51957-13	96906	2	7
MS51957-13	96906	7	53
MS51957-28	96906	2	2
MS51959-13	96906	2	35
MS35338-60	96906	7	13
MS35619-224	96906	7	119
MS35649-244	96906	8	6
MS35649-284	96906	2	20
201521	34199	2	10

By Order of the Secretary of the Army:

BERNARD W. ROGERS
General United States Army
Chief of Staff

Official:

J.C. PENNINGTON
Brigadier General, United States Army
The Adjutant General

DISTRIBUTION:

Active Army:

TSG (1)
USAARENBD (1)
USAINSCOM (2)
TRADOC (2)
DARCOM (1)
TECOM (2)
OS MAj Comd (2)
USACC (2)
HISA Ft Monmouth (2)
Armies (1)
USASIGS (10)
Svc Colleges (1)
Ft Huachuca (5)
Ft Richardson CERCOM Ofc (1)
WSMR (1)
Fort Carson (5)
USAERDAA (1)

USAERDAW (1)
Army Dep (1) except
LBAD (10)
SAAD (30)
TOAD (14)
SHAD (3)
Fort Gillem (10)
USA Dep (1)
Sig Sec USA Dep (1)
Units org under fol TOE:
(1 copy each)
11-500(AA-AC)
29-134
29-136
(2 copies each)
29-207
29-610

NG: State AG (0); Units-None

USAR: None

For explanation of abbreviations used, see AR 310-50.

RECOMMENDED CHANGES TO EQUIPMENT TECHNICAL PUBLICATIONS



THEN... JOT DOWN THE DOPE ABOUT IT ON THIS FORM. CAREFULLY TEAR IT OUT. FOLD IT AND DROP IT IN THE MAIL!

SOMETHING WRONG WITH THIS PUBLICATION?

FROM: (PRINT YOUR UNIT'S COMPLETE ADDRESS)

DATE SENT

PUBLICATION NUMBER

PUBLICATION DATE

PUBLICATION TITLE

BE EXACT... PIN-POINT WHERE IT IS

PAGE NO.

PARA-GRAPH

FIGURE NO.

TABLE NO.

IN THIS SPACE TELL WHAT IS WRONG AND WHAT SHOULD BE DONE ABOUT IT:

TEAR ALONG PERFORATED LINE

PRINTED NAME, GRADE OR TITLE, AND TELEPHONE NUMBER

SIGN HERE:

DA FORM 2028-2 JUL 78

PREVIOUS EDITIONS ARE OBSOLETE.

P.S.—IF YOUR OUTFIT WANTS TO KNOW ABOUT YOUR RECOMMENDATION MAKE A CARBON COPY OF THIS AND GIVE IT TO YOUR HEADQUARTERS.

THE METRIC SYSTEM AND EQUIVALENTS

WEIGHT MEASURE

1 Centimeter = 10 Millimeters = 0.01 Meters = 0.3937 Inches
 1 Meter = 100 Centimeters = 1000 Millimeters = 39.37 Inches
 1 Kilometer = 1000 Meters = 0.621 Miles

WEIGHTS

1 Gram = 0.001 Kilograms = 1000 Milligrams = 0.035 Ounces
 1 Kilogram = 1000 Grams = 2.2 lb.
 1 Metric Ton = 1000 Kilograms = 1 Megagram = 1.1 Short Tons

LIQUID MEASURE

1 Milliliter = 0.001 Liters = 0.0338 Fluid Ounces
 1 Liter = 1000 Milliliters = 33.82 Fluid Ounces

SQUARE MEASURE

1 Sq. Centimeter = 100 Sq. Millimeters = 0.155 Sq. Inches
 1 Sq. Meter = 10,000 Sq. Centimeters = 10.76 Sq. Feet
 1 Sq. Kilometer = 1,000,000 Sq. Meters = 0.386 Sq. Miles

CUBIC MEASURE

1 Cu. Centimeter = 1000 Cu. Millimeters = 0.06 Cu. Inches
 1 Cu. Meter = 1,000,000 Cu. Centimeters = 35.31 Cu. Feet

TEMPERATURE

$5/9(^{\circ}\text{F} - 32) = ^{\circ}\text{C}$
 212° Fahrenheit is equivalent to 100° Celsius
 90° Fahrenheit is equivalent to 32.2° Celsius
 32° Fahrenheit is equivalent to 0° Celsius
 $9/5^{\circ}\text{C} + 32 = ^{\circ}\text{F}$

APPROXIMATE CONVERSION FACTORS

TO CHANGE	TO	MULTIPLY BY
Inches	Centimeters	2.540
Feet	Meters	0.305
Yards	Meters	0.914
Miles	Kilometers	1.609
Square Inches	Square Centimeters	6.451
Square Feet	Square Meters	0.093
Square Yards	Square Meters	0.836
Square Miles	Square Kilometers	2.590
Acres	Square Hectometers	0.405
Cubic Feet	Cubic Meters	0.028
Cubic Yards	Cubic Meters	0.765
Fluid Ounces	Milliliters	29.573
its	Liters	0.473
arts	Liters	0.946
allons	Liters	3.785
Ounces	Grams	28.349
Pounds	Kilograms	0.454
Short Tons	Metric Tons	0.907
Pound-Feet	Newton-Meters	1.356
Pounds per Square Inch	Kilopascals	6.895
Miles per Gallon	Kilometers per Liter	0.425
Miles per Hour	Kilometers per Hour	1.609

TO CHANGE	TO	MULTIPLY BY
Centimeters	Inches	0.394
Meters	Feet	3.280
Meters	Yards	1.094
Kilometers	Miles	0.621
Square Centimeters	Square Inches	0.155
Square Meters	Square Feet	10.764
Square Meters	Square Yards	1.196
Square Kilometers	Square Miles	0.386
Square Hectometers	Acres	2.471
Cubic Meters	Cubic Feet	35.315
Cubic Meters	Cubic Yards	1.308
Milliliters	Fluid Ounces	0.034
Liters	Pints	2.113
Liters	Quarts	1.057
ers	Gallons	0.264
ms	Ounces	0.035
ograms	Pounds	2.205
Metric Tons	Short Tons	1.102
Newton-Meters	Pounds-Feet	0.738
Kilopascals	Pounds per Square Inch	0.145
ometers per Liter	Miles per Gallon	2.354
ometers per Hour	Miles per Hour	0.621



PIN: 020056-000